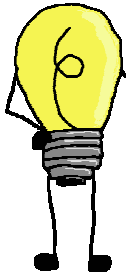


QUIS ES ?

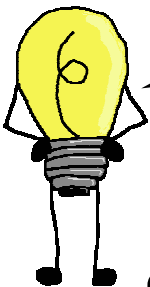
sum.



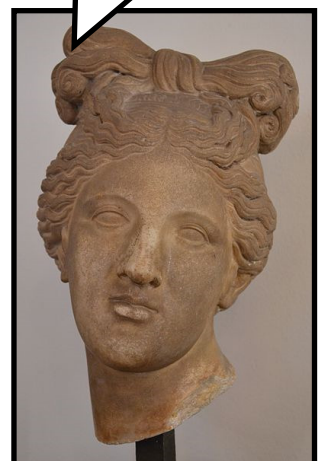
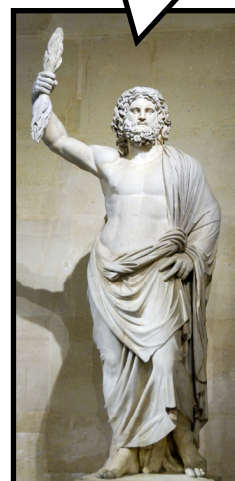
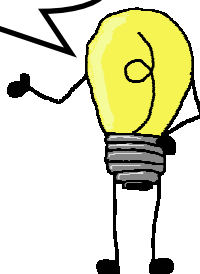
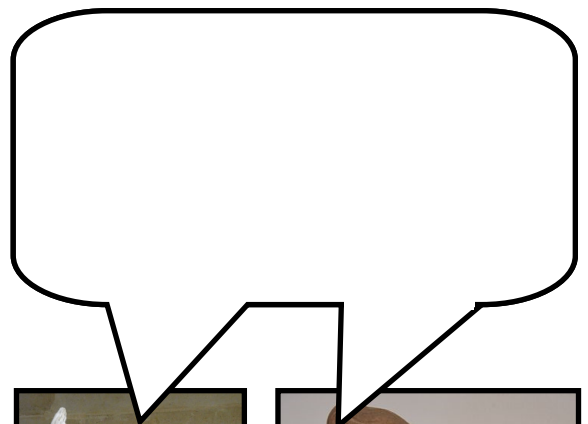
quis es ?



quis es ?



quī estis ?



NOTES FOR THE TEACHER

Students fill in the missing questions (quis es?) and the correct answers. They will need to be able to see the pictures of the gods and goddesses on the accompanying PowerPoint presentation.

For example, the top left speech bubble will read "Iūnō sum."